

General Notes:

- Highlighted courses designate "Critical Tracking" requirements
- Minimum 'C' grade required in all non-general studies courses
- Prerequisites denoted by →
- Co-requisites denoted by →

+ Course Notes:

- All upper-division CSE courses (including cybersecurity focus and technical electives) require additional prerequisites.
- Please check the Course Catalog for specific information.

REQUIRED AWARENESS AREAS

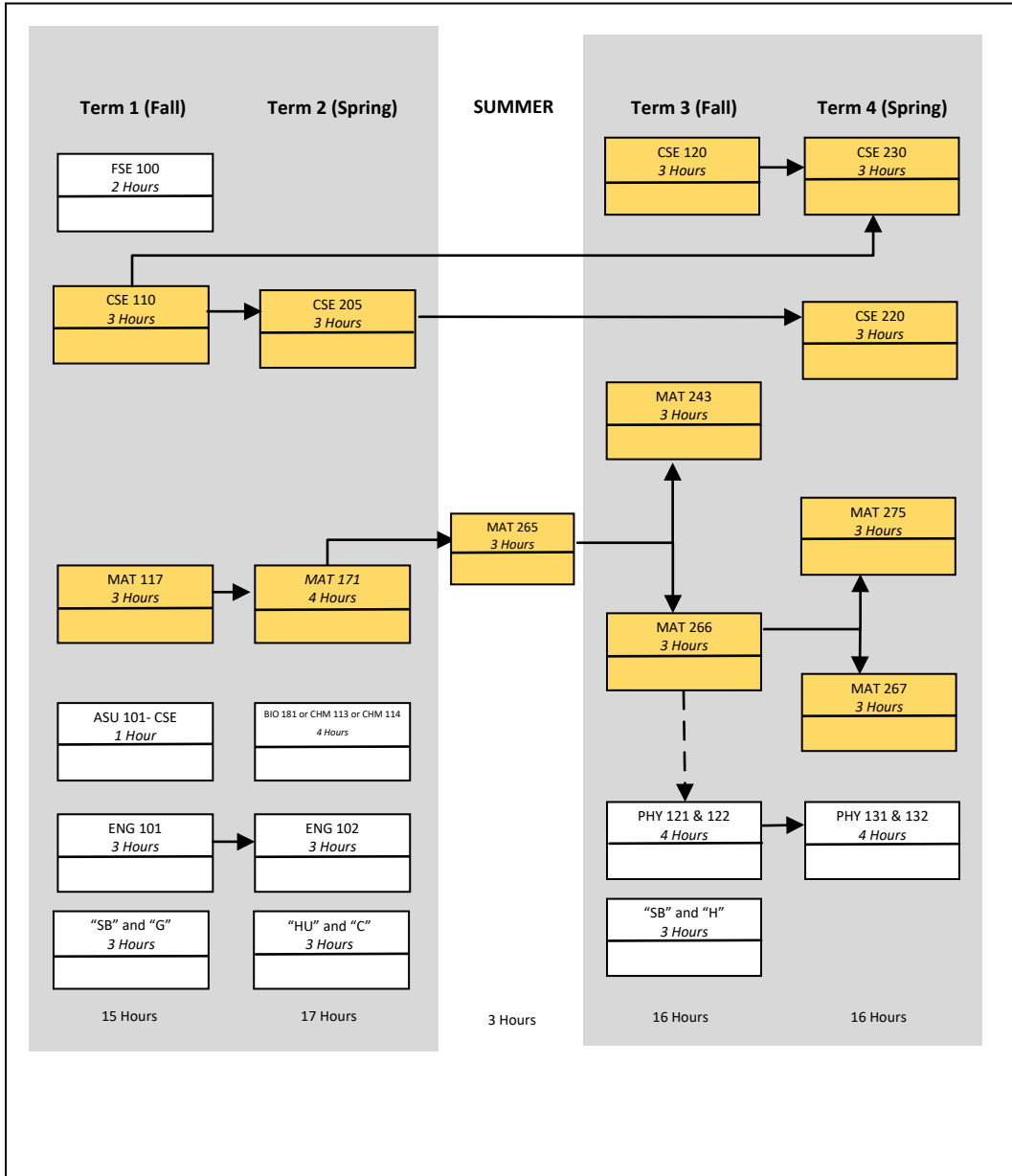
| | |
|--|------------|
| | Cultural |
| | Global |
| | Historical |

Updated on: _____

Alternative Math Placements: Term 1-4 Flowcharts

The below alternative flowcharts are for students who do not place directly into MAT 265: Calculus I. The alternative flowcharts show students who place into MAT 117: College Algebra or MAT 170/171: Pre-Calculus the sequence of courses they will take in Terms 1-4 to remain “on-track” for graduation. After completing Term 1-4 coursework on the Alternative Flowchart, students will transition to Terms 5-8 on the principle major flowchart. This includes all prerequisites for Term 5-8 courses as noted on the principle major flowchart

MAT 117: College Algebra



MAT 171: Pre-Calculus

