

General Notes:

- Highlighted courses designate "Critical Tracking" requirements
- Minimum 'C' grade required in all non-general studies courses
- Prerequisites denoted by →
- Co-requisites denoted by →

+ Course Notes:

- CSE 412 requires CSE 310 as a prerequisite
- CSE 434 requires CSE 230 and CSE 310 as prerequisites
- CSE 445 requires CSE 360 as a prerequisite
- CSE 468 requires CSE 434 as a prerequisite
- All cybersecurity focus and elective courses have additional prerequisites include CSE 365
- Please check the Course Catalog for specific information.

REQUIRED AWARENESS AREAS

	Cultural
	Global
	Historical

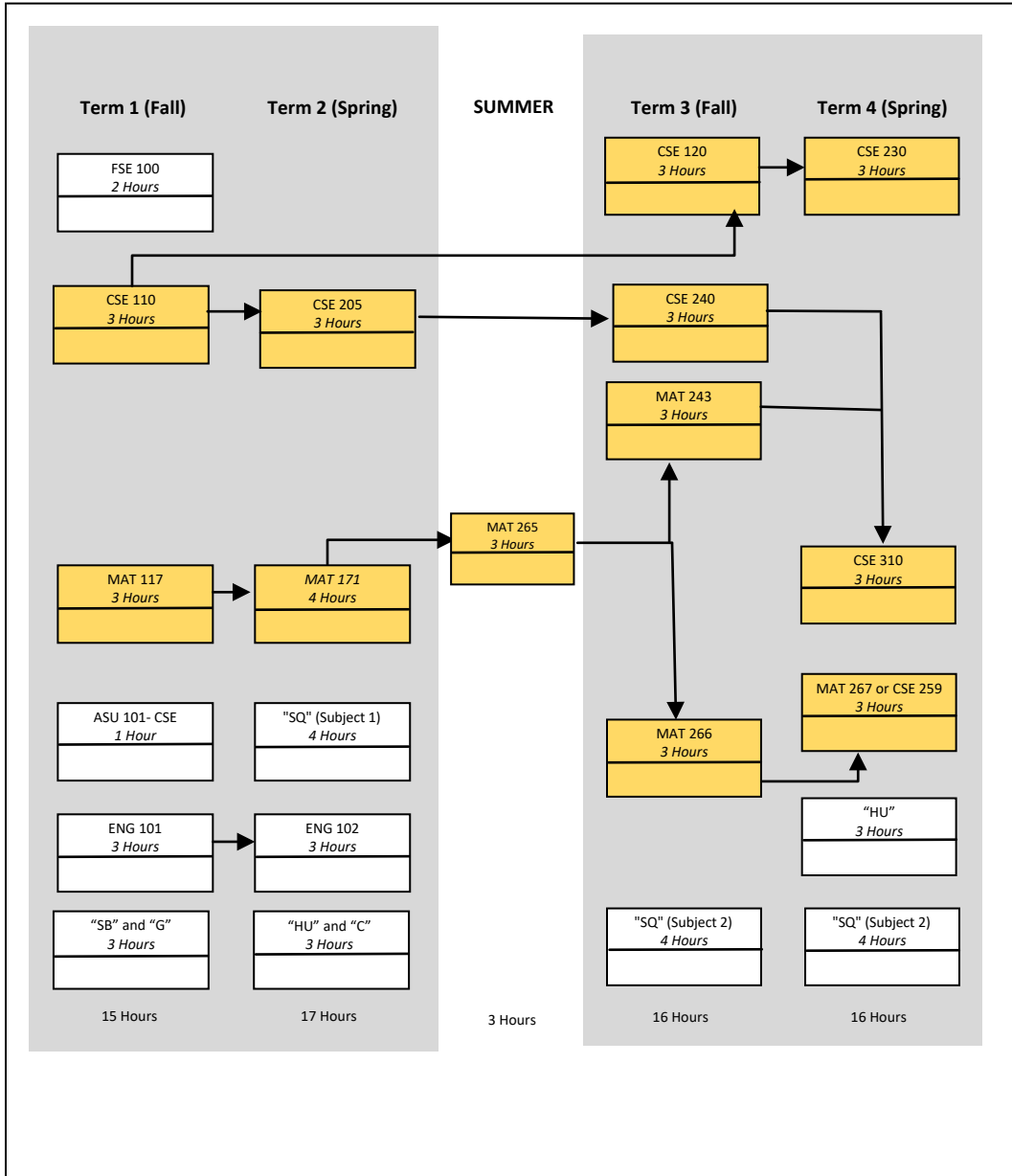
Please regularly check the [Program Website](#) to keep informed of any prerequisite or program changes to the Computer Science major.

Updated on: _____

Alternative Math Placements: Term 1-4 Flowcharts

The below alternative flowcharts are for students who do not place directly into MAT 265: Calculus I. The alternative flowcharts show students who place into MAT 117: College Algebra or MAT 170/171: Pre-Calculus the sequence of courses they will take in Terms 1-4 to remain "on-track" for graduation. After completing Term 1-4 coursework on the Alternative Flowchart, students will transition to Terms 5-8 on the principle major flowchart. This includes all prerequisites for Term 5-8 courses as noted on the principle major flowchart

MAT 117: College Algebra



MAT 171: Pre-Calculus

